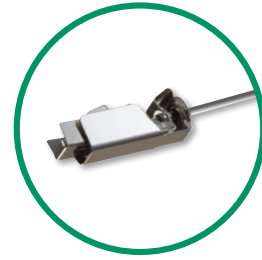


Surshield-PUR Safety I.V. Catheters

Terumo's new safety catheters, Surshield-PUR Safety I.V. Catheters have a passive safety activation with SurFlash™, our exclusive catheter placement indicator.



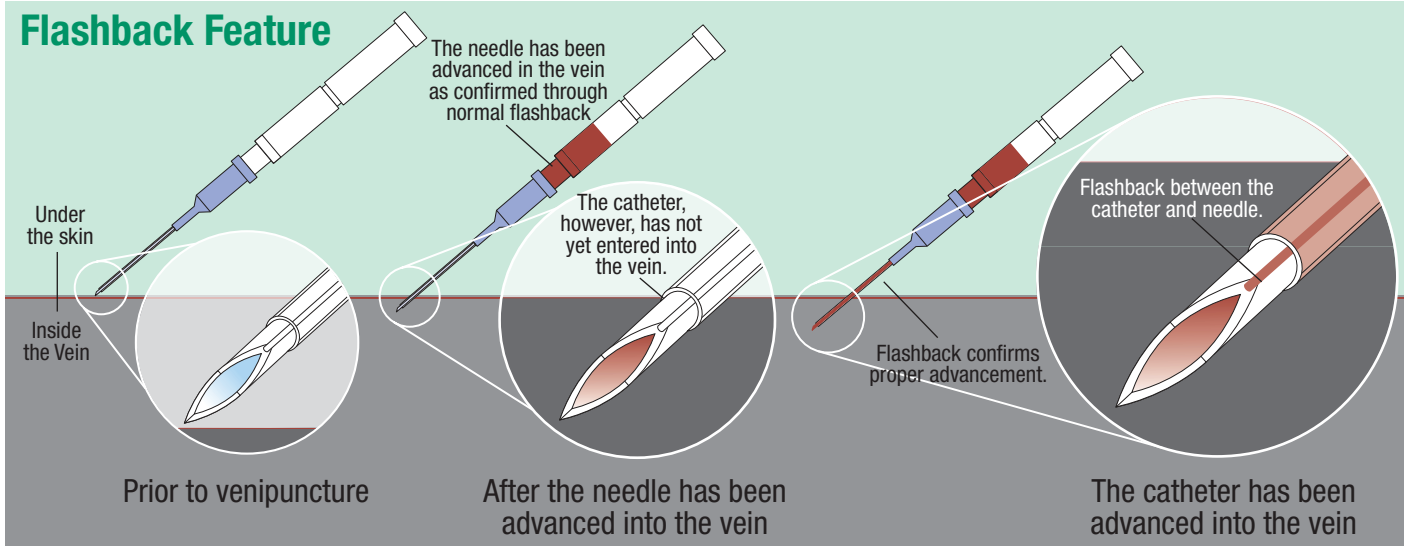
- Passive safety to reduce risk of needlestick injury – without adding extra steps to your procedures
- SurFlash™ enhanced flashback feature provides clear visual confirmation of catheter placement, for increased confidence and first-stick success*
- Easy to use
- Automatic activation - no extra steps needed
- A compact design that minimizes the waste volume

Packed: 50/box, 4 boxes/case (200)

Product Code	Description
■ SR*SFF1832A	18G x 1 ¼"
■ SR*SFF2025A	20G x 1"
■ SR*SFF2032A	20G x 1 ¼"
■ SR*SFF2225A	22G x 1"
■ SR*SFF2232A	22G x 1 ¼"
■ SR*SFF2419A	24G x ¾"



Flashback Feature



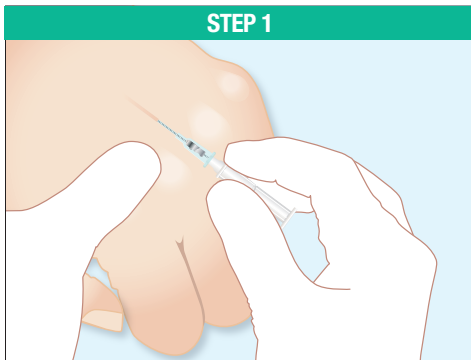
Note: The needle insertion angle in the illustration differs from actual insertion angle.

Call your Terumo representative at:
1.800.888.3786 or visit www.TerumoTMP.com
 and click on Find Your Local Terumo Representative.

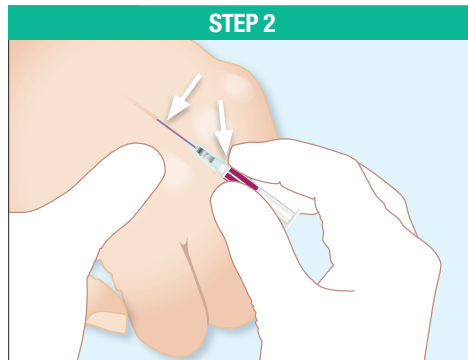
* Data on file.
 These products have no components made of natural rubber latex.

Surshield-PUR Safety I.V. Catheters: Instructions For Use

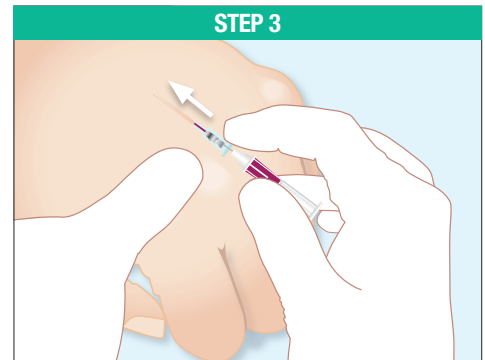
The TERUMO Surshield-PUR Safety I.V. Catheter is inserted into the patient's vascular system for short term use to withdraw blood samples, administer fluid intravenously, or monitor blood pressure by attaching a monitoring line. The needle shield feature aids in the prevention of needle stick injuries. These catheters may be used for any patient population with consideration given to adequacy of vascular anatomy and appropriateness for the solution being infused and duration of therapy.



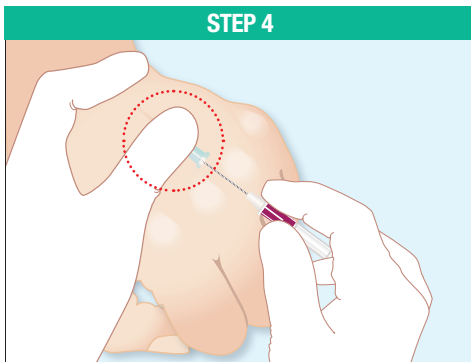
STEP 1. After disinfection of the puncture site and removal from the protector, perform venipuncture.



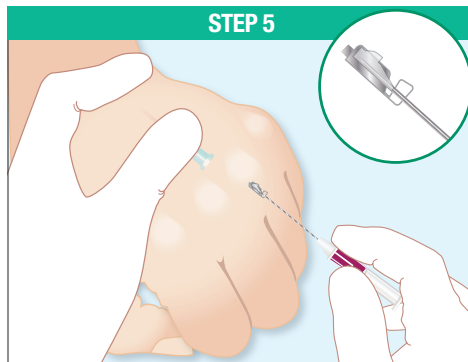
STEP 2. If venipuncture is successful, blood will immediately be visible through blood flashback at transparent inner needle hub and the catheter itself.



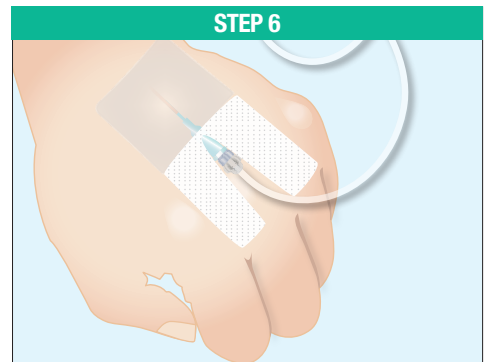
STEP 3. Holding the inner needle hub firmly, advance the catheter further into the vein.



STEP 4. Before removing the inner needle, compress the vein at the tip of catheter to prevent blood spillage. Holding the colored catheter hub firmly, withdraw the inner needle straight back in steady motion.



STEP 5. The safety cover will automatically attach to the inner needlepoint. Dispose of the needle immediately into sharps container.



STEP 6. Connect administration set or transfusion set to the colored hub and cover puncture site with a sterile dressing.

CAUTION

- Do not use if unit package is damaged.
- Take out the product from the protector withdrawing carefully straight backward.
- If the safety mechanism fails to activate, carefully dispose the product appropriately.
- For certain activation of safety mechanism, be careful not to withdraw the inner needle at an extreme angle or rotating or too quickly.
- Do not attempt to re-insert a partially or a completely withdrawn needle.
- Do not use scissors or other sharp objects near or at the insertion site.
- Do not touch the safety cover after withdrawal of the inner needle for infection prevention.
- Do not use under high pressure (>21psi/150kPa).
- This product contains metal material. Careful attention should be paid when using the product where Magnetic Resonance Imaging (MRI) is anticipated.
- Store at room temperature and avoid excessive heat and humidity.
- Change catheter according to CDC guidelines and/or institution protocols.

RX ONLY. The advertisement is directed to physicians only, and not to consumers. Refer to product labels and packaging insert for complete warnings, precautions, potential complications, and instructions for use. Products may not have regulatory approval in all countries. Please contact your local sales representative if you have questions about the availability of products in your area.

TERUMO, TERUMO, SURSHIELD and SURFLASH are trademarks owned by Terumo Corporation, Tokyo, Japan, and they are registered with the U.S. Patent & Trademark Office. 06/2024 PM-08333

